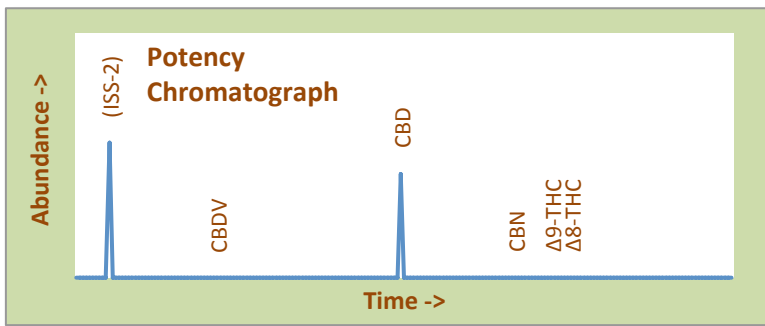


ADAPT AND ADJUST SACRED WELLNESS

Certificate of Analysis

Assay Date: March 3, 2020	BioTrack ID#:	Foreign Material Inspection Inspection not required
Material: TINCTURE	not provided	
Method: HPLC		
Internal ID: SCW 022	<i>Sample collected by client</i>	
Moisture: Not Performed		



Abundant Terpenes			
1) a-Pinene	**	11) Terpinolene	**
2) Camphene	**	12) Linalool	**
3) b-Pinene	**	13) Isopulegol	**
4) Myrcene	**	14) Geraniol	**
5) 3-Carene	**	15) b-Caryophyllene	**
6) a-Terpinene	**	16) a-Humulene	**
7) d-Limonene	**	17) Nerolidol	**
8) p-Cymene	**	18) Guaiol	**
9) Ocimene	**	19) a-Bisabolol	**
10) g-Terpinene	**		
Terpene Total		(not performed)	

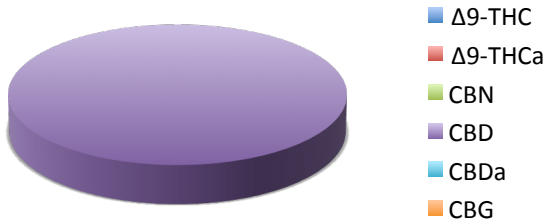
Cannabinoid*	mg/gram	Method	
Δ9-THC	<0.1	HPLC	Total THC = <0.01%
Δ9-THCa	<0.1	HPLC	(Δ9 Activation = n/a)
CBN	0.00	HPLC	Total THC = <0.1 mg/unit
CBD	8.9	HPLC	Total CBD = 0.89%
CBDa	<0.1	HPLC	(CBD Activation = 100%)
CBG	np	GC	Total CBD = 270 mg/unit
Total	8.9	HPLC	(Unit Size: 30 g)

Terpene Profile

(analysis not performed)

TerpType®: (profile not performed)

*Δ9-THC, Δ9-THCa and Total CBD are reported to BioTrack. 'np' = test not performed



Residual Solvents (ppm), bold-red if failed*
(residuals test not performed)

Microbial Screen (cfu/gram)	Observed Rate	
- Total aerobic plate count:	<1000	Passes
- Total yeast and mold count:	<10	Passes
- Bile-tolerant gram negative:	<10	Passes
- E. Coli:	nd	Passes
- Salmonella spp.:	nd	Passes
- Mycotoxins (B1, B2, G1, G2, OA):	<1 ppb	Passes

Sample Passes Microbial Screen

Approved on March 06, 2020
Results are non-transferable
and valid for 30 days.

Barry Dungan
Rio Grande Analytics
Las Cruces, NM
Barry Dungan - lab manager

* Residual limits can be found at: <http://riograndeanalytics.net/Residuals.html>. No limit for ethanol.